

# Atlantis Casino Resort & Spa



# NABA

## Nevada Association for Behavior Analysis



## 2014 Annual Conference Program of Events

University of Nevada, Reno &  
Atlantis Casino Resort & Spa  
Reno, Nevada  
October 17th-19th

## About NABA

**The continuing mission of the Nevada Association for Behavior Analysis is to promote intellectual exchange and professional development in the field of behavior analysis in all its facets to include: philosophical, theoretical, experimental, applied, and practice.**

The Nevada Association for Behavior Analysis (NABA) is an affiliate chapter of the Association for Behavior Analysis International (ABAI). Affiliated chapters are membership organizations associated with ABAI through their interest in the dissemination, education, and growth of behavior analysis. ABAI records indicate NABA's first official year of operation was 2003. Since its inception, NABA has maintained the mission of promoting intellectual exchange and professional development in the field of behavior analysis.

## NABA Executive Council

### President

Rebecca Arvans, Ph.D., BCBA-D, LBA 2012-2014

### President Elect

Gwen Diggins, Ph.D., BCBA-D, LBA 2013-2015

### Secretary and Treasurer

Lauren Brown, M.A., BCBA 2012-2014

### Secretary and Treasurer Elect

Christina Peters, Msc.Ed., BCBA, CBIS 2013-2015

### At-Large Representative

Brian Feeney, M.A., BCBA, LBA 2012-2014

### At-Large Representative Elect

Justin Kyriannis, M.A., BCBA, LMHC, LBA 2013-2015

### Student Representatives

Janie Funk, B.S. 2012-2014

Kathryn Roose, B.S. 2013-2015

## University of Nevada, Reno Joe Crowley Student Union



## Sunday, Oct. 19<sup>th</sup> - continued



1:20 PM - 2:20 PM

**Scott R. Robinson, Ph.D.**

**Invited Presentation: Environmental Contingencies and Associative Learning Before Birth (1 CEU)**

**Abstract:** The possibility of learning and memory before birth has fascinated poets and philosophers for centuries. But only in the past few decades has fetal learning received serious scientific scrutiny. Although misconceptions and exaggerated claims still abound in the popular

media, a substantial body of empirical evidence has accumulated for the acquisition and expression of associative learning in the fetus. The strongest experimental evidence for fetal learning stems from research with animals under controlled laboratory conditions. Pairing a novel flavor with injection of lithium chloride, for instance, is effective in promoting conditioned taste/odor aversion in fetal rats that can persist to alter dietary and drinking preferences after birth. Experimental paradigms such as these leave open the question of how learning might occur, and even contribute, to normal development before birth. My laboratory has investigated two lines of research related to this question of fetal learning: (1) how the chemical environment *in utero* may create conditions that promote classical conditioning during normal development, and (2) how the physical environment of the uterus may provide a natural training mechanism that supports operant conditioning before birth. In this presentation, I will briefly summarize evidence from our experimental studies of fetal rats in both of these lines of research to argue that learning is commonplace and an essential element of the development of behavior before birth.

2:30 PM - 3:30 PM

**Jane E. Fisher, Ph.D.**

**Invited Presentation: Promoting Quality of Life of Elderly Persons with Cognitive Disorders (1 CEU)**

**Abstract:** Cognitive disorders such as Alzheimer's disease and vascular dementia develop at a point in the lifespan when behavioral repertoires and social contexts are characteristically complex. These disorders produce devastating losses to the behavioral repertoires of older adults. This presentation will describe a contextual model

for promoting the behavioral health and quality of life of persons with cognitive disorders and their families. Recent research on factors that contribute to excess disability in older adults with dementia and strategies for detecting and preventing behavioral decline due to medical and environmental adverse events in older adults with dementia will be reviewed. The potential role of behavior analysts in national efforts to reduce the overmedication and improve the quality of care of persons with dementia will also be discussed.

13

## Membership Information

The Nevada Association for Behavior Analysis (NABA) has four categories of membership. Membership dues must be paid annually. Membership terms run from July 1st to June 30th.

- **Full Members** shall hold a masters or doctoral degree or equivalent in a field related to behavior analysis. Full Members may vote on matters related to NABA.
- **Student Members** shall provide documentation of full time student status by an official of their training institution. Student Members have student representative voting privileges only.
- **Affiliate Members** shall be those who do not meet the requirements of either Full or Student Members. Affiliate Members do not have voting privileges.
- Any member can support NABA financially by paying the fee of **Sustaining Members** and receive recognition as such.

All members of NABA, regardless of membership type, enjoy many benefits, such as reduced conference registration fees and subscription to our newsletter.

## Continuing Education

BCBAs and BCaBAs will be able to obtain up to 10 CEUs for the conference and 6 CEUs for the preconference workshops for \$10 each or an unlimited number for \$50. The fee will be paid in exchange for a CEU certificate on the last day of the conference.

2



**Friday, October 17<sup>th</sup>**  
**University of Nevada, Reno**  
**Joe Crowley Student Union - Room 320**

**8:30 AM - 2:00 PM**

Check-in & On-site Registration

**9:00 AM - 12:00 PM**

Ethics Workshop (3 CEUs).....Rebecca Arvans  
 Gwen Diggins  
 Brian Feeney  
 Justin Kyriannis  
 Ron Van Houten

**12:30 PM - 1:30 PM**

Brown Bag Lunch.....Michelle Canning  
 Julie Kotchevar  
 Kenneth R. MacAleese

**1:45 PM - 4:45 PM**

Interdisciplinary Issues (3 CEUs).....Elaine Brown  
 Lauren Brown  
 Janie Funk  
 Ashley Greenwald  
 Christina Peters  
 Kathryn Roose  
 Rachel Walden

**Saturday, October 18<sup>th</sup>**  
**Atlantis Casino Resort & Spa**  
**Grand Ballroom 1-2**

**8:30 AM - 12:30 PM**

Check-in & On-site Registration

**9:00 AM - 9:10 AM**

Opening Remarks.....Rebecca Arvans

**9:10 AM - 10:10 AM**

Invited Presenter.....Matthew P. Normand

**10:15 AM - 11:15 PM**

Invited Presenter.....Ron Van Houten

**Sunday, Oct. 19<sup>th</sup> - continued**



**9:30 AM - 10:30 AM**

**Donald A. Hantula, Ph.D.**

**Invited Presentation: Why Seemingly Smart People Make Stupid Decisions, Repeatedly: A Behavioral Economic Analysis (1 CEU)**

Abstract: Individual learning histories can trap people into failing policy decisions; research shows that feedback akin to variable interval reinforcement contingencies is a necessary condition for repeated failure. Earlier theories of policy decision-making have posited that commitment of resources to failing ventures (persistence) and increases during failing ventures (escalation) are forms of pathology themselves- instances of “irrational” behavior. Under these assumptions, very little attention was paid to temporal or sequential factors that may have led to these phenomena. A synthesis of behavioral and economic research and theory along with computational modeling shows instead that such persistence and escalation is a rational response to decision dilemmas characterized by equivocality and repeated feedback. Further, while Bayesian reasoning is promoted as a rational account of decision making, algorithms simulated individual learning histories and a Bayesian updating process of expected success or failure. Results of 1,000 computer simulations revealed that escalation and persistence emerged for most learning histories and the perfectly rational Bayesian escalates policy decisions.

~ MORNING BREAK ~



**10:50 AM - 11:50 AM**

**Edward K. Morris, Ph.D.**

**Keynote Address: What’s a Principle of Behavior and How Many Are There? (1 CEU)**

Abstract: What is a principle of behavior and how many are there? These questions are not addressed in behavior-analytic literature, perhaps because they are a fool’s errand. I pursue the errand. First, what is a *principle of behavior*? I review definitions of *principle* and compare and contrast them with related terms (e.g., *laws*, *processes*). I consider the definition of *principle* in psychology (Spencer, James), behavioral psychology (e.g., Hull, Kantor), and behavior analysis (e.g., Keller & Schoenfeld, Michael). I propose a generic definition of a *behavioral principle*, in contrast to behavioral laws and processes, based on Skinner’s (1957) analysis of verbal behavior (e.g., abstract tacts). Second, how many principles are there? I suggest that how many exist depends on what they are. Some may be primary, others are secondary, conditioned, or in a sense derived. I propose that, if some principles are derived, then relational frame theory enriches behavior analysis with an additional principle or principles, derived in a different sense, rather than standing in opposition to it, as some critics avow. Third, although my answers to these questions are likely incomplete, my approach to answering them might inform analyses and definitions of greater scope and precision.

~ LUNCH BREAK /STUDENT MEETING~

## Saturday, Oct. 18<sup>th</sup> - Atlantis Casino

26. Investigating the Contributions of Mimicked and Relative Pitch to the Acquisition of Absolute Pitch, Benjamin Reynolds, Linda J. Parrott Hayes
  27. Standardizing the Supervision Process: Methods for Measuring Competency, Staheli Meyer, Timothy C. Fuller, Linda J. Parrott Hayes
  28. The Use of Proximity as a *Within-Stimulus* Prompt to Teach Conditional Discriminations in a Young Child with Autism, Teal M. McAllister, Ainsley B. Lewon, Marisela Pallares, Patrick M. Ghezzi
  29. Teacher Aides and Contingency Management in the Classroom, Kimberly Loudermilk, Morgan Manson, Kimberly Henkle, Patrick M. Ghezzi
  30. Duration-reduction of Treatment Sessions as Reinforcement for Appropriate Behavior in Young Children with Autism, Emily L. Skorzanka, Ainsley B. Lewon, Daylee Magnison, Patrick M. Ghezzi
- ≈ CONFERENCE SOCIAL (8:30-10:00, BISTRO NAPA) ≈

## Sunday, Oct. 19<sup>th</sup> - Atlantis Casino

8:15 AM – Opening Remarks: Rebecca Arvans, Ph.D., BCBA-D, LBA



8:20 AM -9:20 AM

**Alison Moors Lipshin, M.A., BCBA**  
**Invited Presentation: Precision Teaching: Our Past Legacies, Present Implementations and Future Goals (1 CEU)**

Abstract: In the past decade, the American government set new standards mandating States to use data to report adequate yearly progress for all students with the inception of the No Child Left Behind Act. In addition, to be eligible for government funded education grants, states must show a commitment to “building data systems that measure student growth and success, and inform teachers and principals how to improve instruction” (DOE, 2009, p.2). The growing culture of education reform in our country is focused on the need for formative data collection systems that are teacher friendly and sensitive enough to drive day to day decision making in classrooms and the overall documentation of student growth. Precision Teaching is one such methodology. This presentation will describe the critical features of implementing a Precision Teaching approach and how the resultant student performance data can help teachers ensure their students are achieving their highest potential.

## Saturday, October 18<sup>th</sup> continued

11:30 AM - 12:30 PM

Keynote Address.....Anthony Biglan

≈ LUNCH BREAK ≈

1:30 PM - 5:00 PM

Check-in & On-site Registration

2:00 PM - 3:20 PM

Panel Session.....Ron Van Houten  
 Matthew P. Normand  
 Alison Moors Lipshin  
 Anthony Biglan

3:30 PM - 4:30 PM

Student Presenter.....Matthew Lewon

≈ SPEAKER DINNER (INVITATION ONLY) ROOM: EMERALD B ≈

6:30 PM - 8:30 PM

Poster Session in Treasures C-D.....Pages 9-11

≈ CONFERENCE SOCIAL (8:30-10:00, BISTRO NAPA) ≈

## Sunday, October 18<sup>th</sup> - Grand Ballroom 1-2

8:15 AM - 8:20 AM

Opening Remarks.....Rebecca Arvans

8:20 AM - 9:20 AM

Invited Presenter.....Alison Moors Lipshin

9:30 AM - 10:30 AM

Invited Presenter.....Donald A. Hantula

≈ MORNING BREAK ≈

10:50 PM - 11:50 PM

Keynote Address.....Edward K. Morris

≈ LUNCH BREAK ≈

≈ STUDENT MEETING, 12:15-1:15, GRAND BALLROOM 1-2 ≈

1:20 PM - 2:20 PM

Invited Presenter.....Scott R. Robinson

2:30 PM - 3:30 PM

Invited Presenter.....Jane Fisher

≈ BUSINESS MEETING, GRAND BALLROOM 1-2 ≈

## Friday, Oct. 17<sup>th</sup> - UNR JCSU Rm 320

### *Understanding Appropriate Supervision: Upcoming 2015 BACB Guideline Changes Relevant to the Supervisor, the Supervisee, and Human Subject Institutional Review Boards*

9:00 AM - 12:00 PM (3 CEUs)

Rebecca Arvans, Ph.D., BCBA-D, LBA

Gwen Diggins, Ph.D., BCBA-D, LBA

Brian Feeney, M.A., BCBA, LBA

Justin Kyriannis, M.A., BCBA, LMHC, LBA

Ron Van Houten, Ph.D.

Abstract: This workshop will provide information about the upcoming 2015 BACB Guideline changes that are relevant to BCBAs and their applicants who enter into supervisor and supervisee relationships. Specifically, BCBAs will learn about new BACB requirements, supervisor qualifications, qualities of good supervisors, supervision expectations, supervisee recommendations, contract considerations, and required forms for BACB supervision approval. Additionally, this workshop will discuss why HSIRBs are important, guiding principles of HSIRBs, types of HSIRB approval, and research on misconduct.

### *Brown Bag: How Do Upcoming Medicaid Changes Affect BCBAs in Nevada?*

12:30 PM - 1:30 PM

Michelle Canning, MA, BCBA, LBA

Julie Kotchevar, MA

Kenneth R. MacAleese, Ph.D., BCBA-D, LBA

Abstract: This session will provide information about the upcoming Medicaid changes are relevant to BCBAs in the state of Nevada. Specifically, BCBAs will get an overview of the changes that are coming, including how this may affect their billing practices. The purpose is to generate discussion, address any concerns, and pose any questions that BCBAs may have about this process. All are welcome!

### *Playing Nice: Effective Collaboration Between Behavior Analysts and Other Professionals*

1:45 PM - 4:45 PM (3 CEUs)

Elaine Brown, Ph.D.

Lauren Brown, M.A., BCBA

Janie Funk, B.S.

Ashley Greenwald, M.A., BCBA

Christina Peters, Msc.Ed., BCBA, CBIS

Kathryn Roose, B.S.

Rachel Walden, M.S., CCC-SLP

Abstract: Behavior analysts work in an ever-increasing array of environments and contact a variety of professionals from different fields. Collaboration across disciplines can be meaningful, but can at times be challenging. From one-on-one collaborations to multi-disciplinary teamwork, issues such as professional standards, communication, and scope of practice may warrant further consideration. This workshop is relevant to behavior analysts and other professionals with whom they collaborate. Experts from a variety of fields will be on hand to discuss scenarios in which challenges of multidisciplinary teamwork were resolved. Participants will learn and practice strategies for effective collaboration with professionals from other disciplines.

## Saturday, Oct. 18<sup>th</sup> - continued

6:30 PM - 8:30 PM

### *Poster Titles Continued*

14. **A Further Evaluation of the Effects of Listener Training on the Emergence of Speaker Behavior and Categorization in Children with Autism**, Gregory Lee, Emily Darcey, Adrienne Jennings, Charisse Lantaya, Caio Miguel
15. **Person Centered Planning Within an Evidence Based Service System**, Julie Kotchevar, Michelle Canning, Candice McDaniel
16. **Positive Behavior Support-Nevada: Service Delivery and Outcomes**, Ashley Greenwald, Jodie Soracco, Kathryn Roose
17. **Momentary Prompting and Modeling of Behavior-Based Labor Strategies**, Ashley Greenwald, W. Larry Williams
18. **The Practice and Prevalence of Priming**, Natalia Garrido, Patrick M. Ghezzi, W. Larry Williams
19. **Planning for Statewide Scale-up of School-wide Positive Behavior Support**, Jodie Soracco, Kaci Fleetwood, Ashley Greenwald, Kathryn Roose
20. **Matching in Context: The Choice Altering Effects of Function Altering Stimuli**, Kenneth W. Jacobs, Linda J. Hayes
21. **Response Effort Effects on a Substitution of Perceptual Function Task**, Maria Muñoz-Blanco, Oanh Luc, Linda J. Hayes
22. **Noncompliance in Young Children with Autism: The Effects of Continuous Task Presentation**, Ainsley B. Lewon, Sara L. Stratz, Lauren Jones, Patrick M. Ghezzi
23. **The Effects of Varying Levels of Food Deprivation on Escape and Avoidance Responding in Mice**, Matthew Lewon, Linda J. Parrott Hayes
24. **Trajectory and Time Distribution: Behavioral Methods to Assess Social Interaction in a Mouse Model of Autism**, Maria Isabel Muñoz-Blanco, David Legaspi, Priyanka Khosla, Vitarawat Sriphongngarm, Kenneth Hunter, Linda J. Parrott Hayes
25. **An Evaluation of the High-Probability Instructional Sequence With and Without Demand Fading in the Treatment of Food Selectivity**, Diana Morgan, Kristin Griffith, Becky Penrod, Colleen Whelan, Timothy Howland



## Saturday, Oct. 18<sup>th</sup> - Treasures C-D

6:30 PM - 8:30 PM

### Poster Titles

1. **Assessing the Efficacy of Pictorial Preference Assessments for Children with Developmental Disabilities**, Megan R. Heinicke, James E. Carr, Danika R. Zias, Amber L. Valentino, Sacha T. Pence, John M. Falligant
2. **A Brief Functional Analysis of Repetitive Speech**, Colleen M. Whelan, Kathryn Lee
3. **When Humans Don't Behave Like Animals**, Deric Toney, Ashely Levin, Linda J. Parrott Hayes
4. **A Self-Instructional Package to Train New Staff to Conduct Discrete Trial Teaching**, Thouraya Al-Nasser, W. Larry Williams, Jenn Gheno, Josette O'Mealia
5. **Discounting of Equivalent Stimuli**, Thomas Wade Brown, Mark P. Alavosius
6. **Pardon Our French: Objectionable Statements within Behavior Analysis**, Dominique Stedham, Ryan O'Donnell, Chace Calvert, Linda J. Parrott Hayes
7. **Contingency Contracting on a Balanced Diet**, Krista Bolton-Saksena, Jillian LaBrie
8. **Repeated Exposure Procedures in the Treatment of Food Selectivity**, Krista Bolton-Saksena, Scott Page, Becky Penrod, Jennifer Price, Michelle Watson
9. **The Effects of Successive and Simultaneous Tact Training on Listener Behavior**, Curtis Clough, Caio Miguel, Amanda Chastain, Taylor Sweatt, Sarah Lechago
10. **Effects of Discrimination Abilities on Functional Analysis Outcomes: A Replication and Extension**, Janie Funk, W. Larry Williams, Billy Rom
11. **The Effects of Category Tact Training on the Emergence of Analogical Reasoning**, Careen Meyer, Adrienne Jennings, Timothy Howland, Danielle LaFrance, Charisse Lantaya, Caio Miguel
12. **Assessing the Training and Retention of Volunteers at the Nevada Humane Society**, Carolyn Brayko, Julie Bianchi, Ramona Homanfar
13. **A Behavior Analytic Approach to Tarot Card Reading**, Chace Calvert, Dominique Stedham, Linda J. Parrot Hayes

## Saturday, Oct. 18<sup>th</sup> - Atlantis Casino

9:00 AM – Opening Remarks: Rebecca Arvans, Ph.D., BCBA-D, LBA



9:10 AM – 10:20 AM

**Matthew P. Normand, Ph.D., BCBA-D**

**Invited Presentation: Get Moving: A Programmatic Line of Behavioral Research on Physical Activity in Young Children (1 CEU)**

Abstract: Inadequate physical activity increases risk for a number of health problems, most notably obesity and the corresponding range of associated health complications. Increasing physical activity can help reduce the risk of obesity and other health conditions, and have health benefits independent of weight loss. Despite the importance of physical activity and the health problems associated with inactivity, one can argue that little is known about the relationship of activity to health problems, including obesity. Research and practice in health fitness are dominated by inadequate measurement strategies, typically self-reports. Moreover, very little research has experimentally assessed environmental variables that are functionally related to physical activity. I will discuss problems facing researchers trying to accurately measure and assess physical activity in "free living" conditions and describe research from my lab that is addressing the problems of measurement and assessment so as to better inform interventions designed to increase physical activity and prevent physical inactivity, especially in children. I argue that behavior analytic approaches to research and intervention are well suited to advance research on, and interventions for, health and fitness.

10:15 AM – 11:15 AM

**Ron Van Houten, Ph.D.**

**Invited Presentation: Now That We Have the Treatment of Choice for Autism: Where Do We Go Next? (1 CEU)**



Abstract: Behavior analysis is a powerful tool that could ameliorate many of society's problems. One of the first problems that was seriously addressed with a behavior analytic approach was the treatment of autism. Although a behavioral approach yielded promising results from the start, it took many years before the behavioral approach was accepted as the treatment of choice for autism. Although promising data have also been obtained from applications of behavioral technology to many other social problems, these applications have not yet been widely accepted or disseminated. Skinner envisioned behavior analysis as a technology that would address a wide variety of societal challenges. Initially behavior analysts were highly enthusiastic about society adopting our approach in areas such as education, but many people already working in these fields were resistant to a behavioral approach. This paper will examine a number of areas where behavior analysis could make a difference, and explore ways to overcome obstacles and accelerate the acceptance of our approach.

~ MORNING BREAK ~

## Saturday, Oct. 18<sup>th</sup> - continued



**11:30 AM -12:30 PM**

**Anthony Biglan, Ph.D., BCBA-D**

**Keynote Address: The Nurture Effect: Evolving a Society of Nurturing Environments (1 CEU)**

**Abstract:** It is now possible for behavioral science to systematically influence the further evolution of cultural practices. Accumulated research in prevention science makes it possible, in principle, to ensure that virtually every young person arrives at adulthood

with the skills, interests, values, and health habits needed to lead a productive life in caring relationships with other people. An effective science of intentional cultural evolution must guide efforts to influence the incidence and prevalence of individuals' behaviors and the actions of groups and organizations. I will briefly sketch advances in scientific understanding of the influences on individual behavior. Then I will describe how the same evolutionarily-based contextual principles that have enabled us to treat and prevent most problems of human behavior can guide efforts to influence groups and organizations.

≈ LUNCH BREAK ≈

PLEASE SEE PAGE 8 FOR DINING OPTIONS

**2:00 PM - 3:20 PM Panel Discussion**

**Discussant: Lauren Brown, M.A., BCBA**

**Panelists:**

**Anthony Biglan, Ph.D., BCBA-D**

**Alison Moors Lipshin, M.A., BCBA**

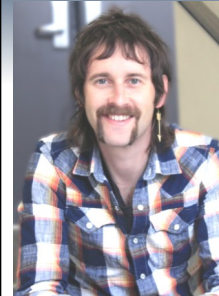
**Matthew P. Normand, Ph.D., BCBA-D**

**Ron Van Houten, Ph.D.**

**Panel Session: Life After Graduate School - Career and Professional Development (1 CEU)**

The transition between graduate school and one's professional career can be difficult and unpredictable. This panel brings together decades of experience from individuals who have had careers in a variety of areas in behavior analysis. The focus of this panel will be on providing perspectives on how to transition from graduate school to one's career, differences between academia and non-academia, balancing one's career and research, and one's career and personal life.

## Saturday, Oct. 18<sup>th</sup> - continued



**3:30 PM - 4:30 PM**

**Matthew Lewon, M.A., BCBA, CABI**

**Student Presentation: Motivation and the Experimental Analysis of Behavior (1 CEU)**

**Abstract:** The study of motivation within behavior analysis has historically pertained to organism-environment interactions that alter the extent to which stimuli function as reinforcers and/or aversive stimuli, thereby producing changes in an organism's behavior with respect to such stimuli. In contemporary behavior

analysis, such interactions are typically accounted for via the motivational operation (MO) concept. While an increasing number of applied studies are manipulating MOs as the independent variables of interest, such studies remain rare within the experimental analysis of behavior (EAB), and relatively little research has been conducted on the effects of MOs in controlled laboratory settings with nonhuman subjects. The present paper will describe the characteristics of MOs, identify the sorts of events that function as MOs, and highlight several areas in which important basic behavior analytic research on MOs needs to be conducted. In so doing, we will present a combination of data obtained from experiments conducted at the University of Nevada, Reno Animal Laboratory as well as conceptual analyses utilizing existing experimental data.

## Dining at the Atlantis

### Atlantis Steakhouse

-Upscale fine dining

### Bistro Napa

-Casual fine dining

### Manhattan Deli

-Casual family-style dining

### Café Alfresco

-Italian Alfresco

### Toucan Charlie's Buffet & Grille

-Family-style, casual dining

### Sushi Bar/Oyster Bar on the Sky Terrace

-Casual dining

### Purple Parrot (24 Hours)

-Casual Dining

### Chicago Dogs! Eatery

-Casual Dining

### Gourmet Grind

-Coffee Shop

### Java etc.

-Coffee Shop